

WINTER CAL – PART 4

TUNISIAN CROCHET IN THE ROUND








DESIGNED BY

MARJOLEIN KOOIMAN



STITCHES

I am using charts to create my patterns. Here you see the explanation of the symbols.

	Name	How to make the stitch	
TSS	Tunisian Simple Stitch	insert hook under vertical bar	 NO stitch
TKS	Tunisian Knit Stitch	insert hook between the front and back vertical bar to the back	 TKS
TES	Tunisian Extended Stitch	pull up a loop as a TSS, YO and PT 1 loop	 TFS
TRS	Tunisian Reverse Stitch	like a TSS but worked on the backside of your work	 TES
TFS	Tunisian Full Stitch	insert your hook between 2 vertical bars to the back	 TRS
CORNER		TKS, YO, TKS in the same stitch	 Corner
YO	Yarn Over		 Return
PT	Pull Through		

All links for the stitches can be found in the Info + Tutorial file.

YOUTUBE VIDEOS

How to start your square : <https://youtu.be/8nQm5zYfKJY>

PATTERN

We are going to make 2 border squares. They are identical to the squares of part 1, again I included the charts. The start of all squares are identical and included in the file of week 1.

PAY ATTENTION TO THE FOLLOWING

- Round 3 (making the corners) is the first row of the chart
- **LOOK CLOSELY BECAUSE FROM ROUND 12 YOU HAVE DIFFERENCES IN THE TRIANGLES**
- Do not mess up the order of the triangles! It will mess up the complete pattern!
- Keep on counting, because you can miss a stitch easily
- Keep the stitches of the corners lined up correctly or else you need to frog a complete round
- You start every square described as above

BINDING OFF

Work all the stitches of the last round, DO NOT make a new corner. Turn your work and make ALL the Return Pass stitches, 1 loop left on the hook.

Use your color 1 for the Bind off row and the hook you used for the Forward Pass (I remove the cable from my hook before binding off.)

- Make only 1 slipstitch on the corners
- Make a bind off stitch (slipstitch) in every stitch
- When you have worked all the stitches close the row with a slipstitch in the first slipstitch (to hide the last return stitch)

CONNECTING SQUARES

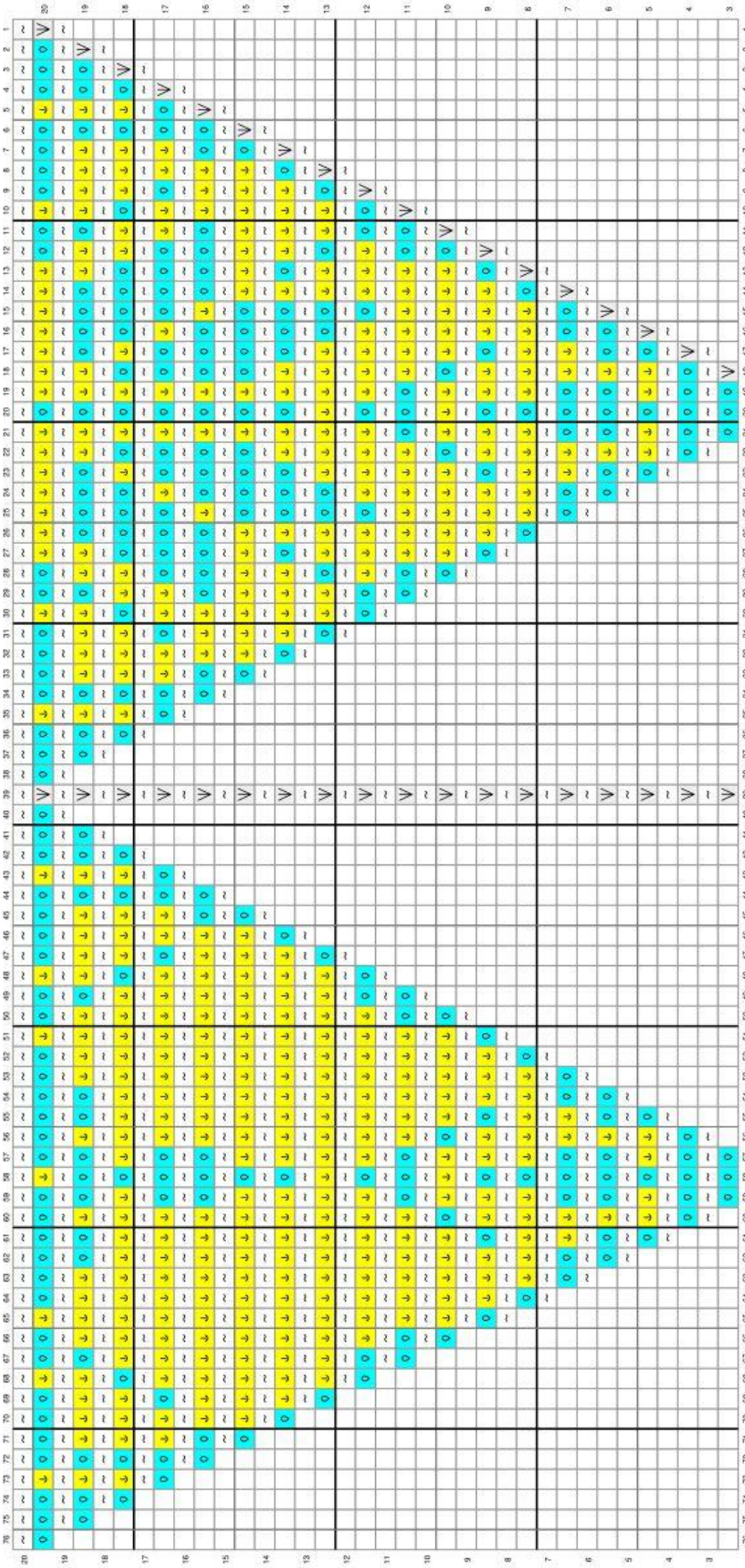
BLOCK YOUR SQUARES BEFORE ATTACHING!

I use the mattress stitch to join the 2 squares. I used the bind off stitches to connect. Be careful that you line up the stitches perfectly. Look close to the pattern of both squares and the photo below how to connect.



week.

Bind off, weave in the ends and you are ready for next



- NO STITCH
- Corner (TKS, YO, TKS)
- TKS
- TRS
- Return

